

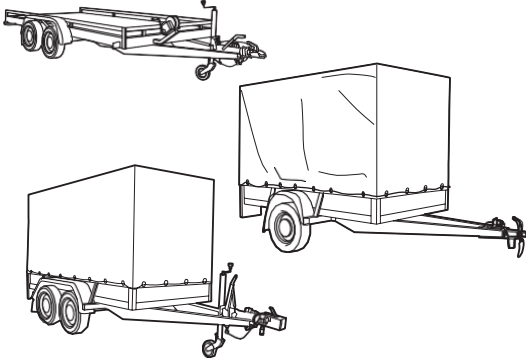
TRAILERS + TRANSPORTERS

Instructions for safety and use.

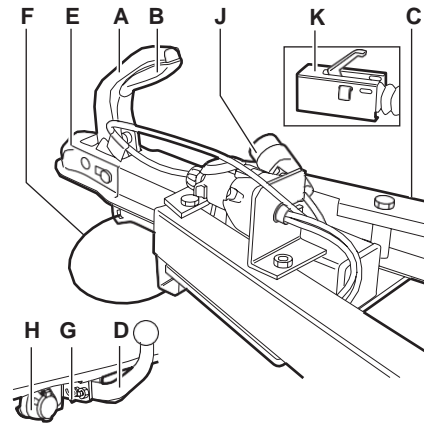
The trailers are intended for transporting building materials, waste paper, garden waste, barrels and tubs, bicycles, camping equipment, furniture, machines and appliances, etc.

The trailers are available with or without a cover, in an unbraked or a braked version and with either a single or double axle.

The transporters are intended for transporting cars, machines and all other types of rolling stock. By default, the transporters are fitted with tie hooks and fastening rings and on request fixed or a removable ramp, a winch or a storage rack support on the front.



2A. OPERATING FUNCTIONS UNBRAKED TRAILERS



- | | |
|--------------------------------|-------------------------------|
| A Handle | F Breakaway security cable |
| B Locking lever release button | G fastening ring |
| C Hitch | H Electrical connector socket |
| D Towing hook | J Plug / power cord |
| E Coupling hitch | K Coupling lock |

2B. OPERATING BRAKED TRAILERS

1. Manoeuvre the trailer to the towing vehicle.
2. Open the coupler/hitch by pressing the release button in the handle.
3. Pull the open coupler/hitch over the tow bar's ball and release the coupler/hitch on the tow bar.
4. Check that the release button has popped out so that the coupler/hitch securely clamps the tow ball.
5. Attach the breakaway safety cable to the securing ring on the tow bar.
6. Unplug the plug from the trailer socket holder. Insert the plug into the socket of the vehicle.

Mount the license plate

If the trailer is not fitted with its own license plate, please attach your own license plate to the trailer.

Loading

Load the trailer.

The tailgate has been fitted with a clasp fastener. Release the clasp fastener and open the tailgate. Keep the tailgate lowered while loading. Load the trailer and secure the load with ratchet straps, trailer cover net cover hoods, or similar. Close the tailgate after securing the load. Make sure that the ratchet straps are tight.

Caution!

Make sure the weight is distributed correctly and evenly.

Check before driving

1. Check vehicle and trailer lights and signalling lights:
2. Make sure that the load is secure; the cargo must not shift while driving.
3. Make sure all support legs are pulled up / turned up.

Releasing the coupler/hitch

1. Make sure the trailer is completely empty.
2. Unplug the power cord and replace the plug in the socket on the coupler/hitch.
3. Remove the breakaway cable from the attachment eye on the tow bar and hang the cable on the coupler/hitch.
4. Unlock the coupler/hitch with the release button in the handle and tilt the coupler/hitch away from the tow bar.

Storage

Will the trailer be stored? Secure the trailer with a chain or with a coupler/hitch lock (available for rent from the rental company). Storing on an inclined embankment? Place wheel wedges to the trailer's wheels to prevent unexpected displacement of the trailer.

SAFETY INSTRUCTIONS



Caution!

Improper operation can cause damage to user, road users or trailer. Read the safety instructions first!

Check before use

- Correct attachment of the coupling/ hitch to the tow bar.
- Draw up jockey wheel and support legs.
- When loading the handbrake is on and released when departing.
- Visually check trailer or transporter on defects.
- Functioning lighting and signalling lights on vehicle and trailer or transporter.
- Check the tire pressure.

Contact the rental company with problems regarding the trailer or transporter!

Safety during use

- Load the trailer and tighten the load with ratchet straps, trailer cover net cover hoods, or similar.
- Prevent overload, see table 'Maximum load and trailer size'
- Balance load to ensure good road handling.

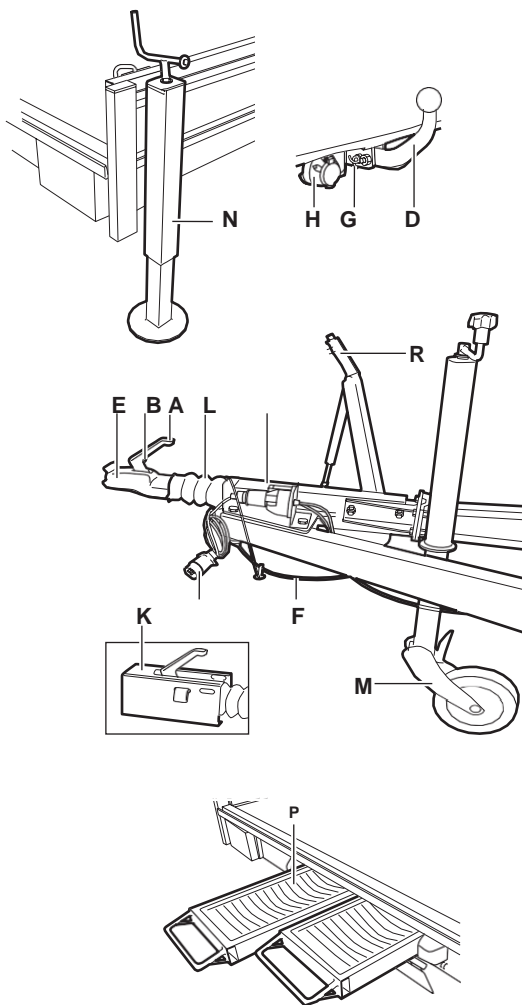
Returning the trailer

Clean the trailer thoroughly inside and outside.

1. MAXIMUM LOADING AND DIMENSIONS LOAD

See nameplate and / or registration documents.

3A. OPERATING FUNCTIONS TRAILER OR TRANSPORTER



- | | |
|----------------------------|-----------------------|
| A Handle | H Socket |
| B Handle release button | J Plug / power cord |
| C Coupler/Hitch | K Coupler /Hitch lock |
| D Towing bar | L Overrun brake |
| E Coupler/hitch | M Jockey wheel |
| F Breakaway securing cable | N Support legs |
| G Securing ring | P load ramps, release |

3B. USE BRAKED TRAILERS OR TRANSPORTER

Attaching

1. Unlock the hand brake of the trailer.
2. Manoeuvre the trailer (or transporter) to the towing vehicle.
3. Turn the jockey wheel and manoeuvre the coupler over the tow bar.
4. Open the release button in the handle and lower the coupler by turning the jockey wheel.
5. Check that the release button has popped out so that the coupler/hitch securely clamps the tow ball.
6. Loosen the jockey wheel clamp and pull the jockey wheel holder fully up. Tighten the jockey wheel clamp.
7. Attach the breakaway safety cable to the securing ring on the tow bar.
8. Unplug the plug from the trailer socket holder. Insert the plug into the socket of the vehicle.
9. Push the handbrake all the way down.

Loading the trailer

Load the trailer.

The trailer's tailgate is fitted with a clasp fastener and support legs.

1. Place the support legs for more stability while loading.
2. Release the clasp fastener and open the tailgate. Keep the tailgate lowered while loading.
3. Load the trailer and secure the load with ratchet straps, trailer cover net cover.

4. Close the tailgate. Check the ratchet straps are secure
 5. Loosen the support legs, pull them up and tighten them again.
- Caution!** Only load the trailer when it is attached to the vehicle.
Caution! Make sure the weight is distributed correctly and evenly.

Loading car transporter

Use the winch and loading ramps when loading vehicles and machines, fasten and secure the load. Depending on the type of car transporter, the carrier has fixed or loose loading ramps.

1. Place the support legs for more stability while loading.
 2. Fixed loading ramps: Release the loading ramps and slowly lower them to the ground. Detached load ramps: Remove the load ramps from the storage compartments at the rear of the trailer and hook onto profile rail of the trailer.
 3. Load the trailer and secure the load with ratchet straps, trailer cover net cover hoods, or similar.
 4. Close the tailgate after securing the load. Make sure that the ratchet straps are tight.
 5. Replace the load ramps in the trailer and secure them.
 6. Loosen the support legs, pull them up and tighten them again.
- Caution!** Only load the trailer when it is attached to the vehicle.
Caution! Make sure the weight is distributed correctly and evenly.

Check before driving

1. Check vehicle and trailer lights and signalling lights:
2. Make sure that the load is secure; the cargo must not shift while driving.

Releasing the coupler/hitch

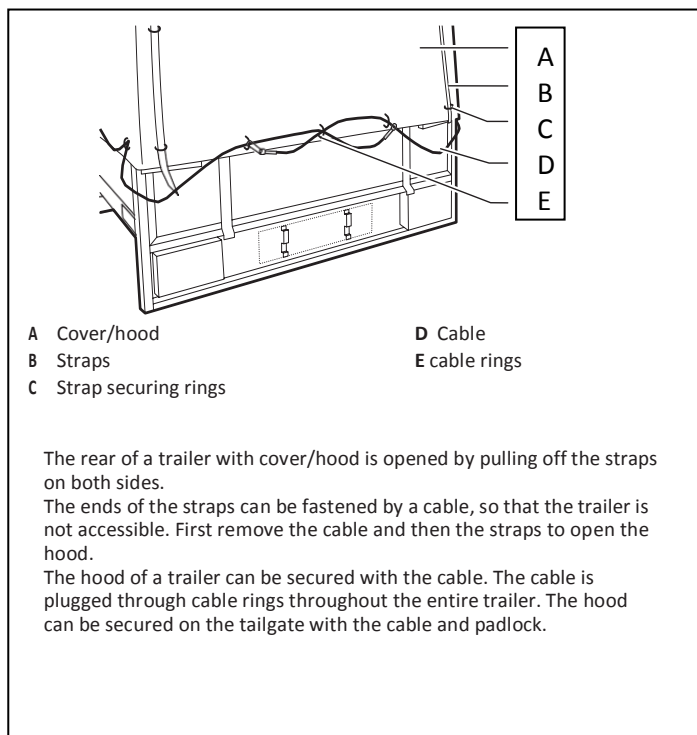
1. Make sure the trailer is completely empty.
2. Pull up the handbrake to prevent accidental displacement of the trailer.
3. Unscrew the jockey wheel clamp and lower the jockey wheel until it touches the ground. Tighten the jockey wheel clamp.
4. Unplug the power cord and replace the plug in the socket on the coupler/hitch.
5. Remove the breakaway cable from the attachment eye on the tow bar and hang the cable on the coupler/hitch.
6. Unlock the coupler/hitch with the release button in the handle and simultaneously turn the jockey wheel and lower it in order to release the coupler/hitch from the tow bar.
7. Manoeuvre the trailer to the parking location.

Storage

Will the trailer be stored? Secure the trailer with a chain or with a coupler/hitch lock (available for rent from the rental company).

Storing on an inclined embankment? Place wheel wedges to the trailer's wheels to prevent unexpected displacement of the trailer.

4. USE OF TRAILERS WITH A COVER/HOOD



- | | |
|------------------------|---------------|
| A Cover/hood | D Cable |
| B Straps | E cable rings |
| C Strap securing rings | |

The rear of a trailer with cover/hood is opened by pulling off the straps on both sides.

The ends of the straps can be fastened by a cable, so that the trailer is not accessible. First remove the cable and then the straps to open the hood.

The hood of a trailer can be secured with the cable. The cable is plugged through cable rings throughout the entire trailer. The hood can be secured on the tailgate with the cable and padlock.