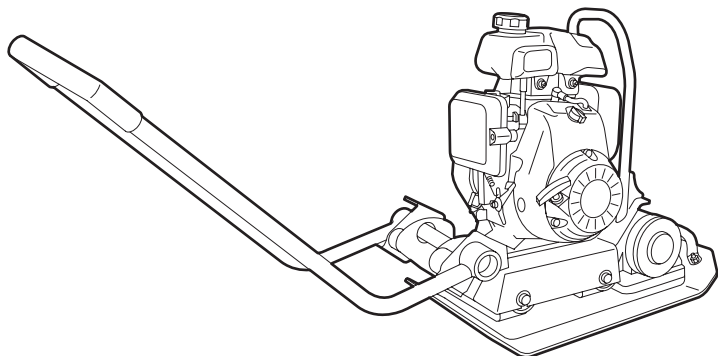


VIBRATORY PLATE COMPACT

Instructions for safety and use

The vibrating plate compactor is intended for compacting cohesive material (clay, silt etc), granular material (sand, light soils etc.) and bituminous material (asphalt, cold lay etc). The vibrating plate is compact, lightweight and handy in use. The push bracket is collapsible for easy transportation. Rent a rubber mat to prevent damage to (ornamental) tiles and natural stone.



Caution!

Improper handling can injure the user or damage the device. Read the safety instructions first!

SAFETY INSTRUCTIONS



Safety for user

- [] Be careful with long hair and loose clothing.
- [] **Never** lift the machine by yourself.
- [] **Never** use the machine without hearing protection.
- [] Make sure you can turn off the machine safely before switching it on.
- [] Secure the work area and keep unauthorised people at a safe distance.
- [] Keep children and pets out of reach of the machine.
- [] Persons under 18 years of age may not work with the machine.

Check before use

- [] Position of contact switch. This must be in OFF position.
- [] If oil dipstick shows oil level. If necessary add 10W30 motor oil.
- [] Fuel and oil leakage.
- [] Machine visually for damage.
- [] Motor, cables and protective caps for damage.

Contact the rental company should you encounter problems the machine!

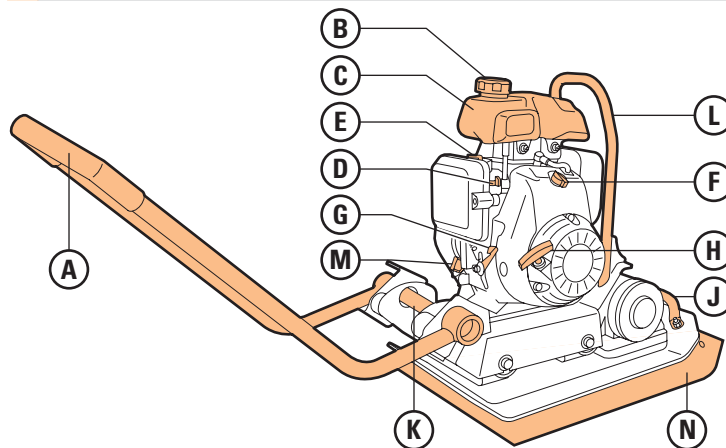
Safety during use

- [] Exhaust gases are poisonous. Provide ventilation when using the machine in closed or poorly ventilated area.
- [] **Never** leave motor running unattended.
- [] The motor gets very hot, do not touch when it is running.
- [] Turn off the motor and allow it to cool down before refilling with fuel.
- [] Refuel tank in open air without open fire and do not smoke, close tank cap well after filling.
- [] Petrol is inflammable and explosive. Spilled fuel must be removed before starting the motor.
- [] Machine is not suitable for vibrating fresh asphalt, fresh asphalt sticks to the footplate.

Safety after use

- [] Switch off engine and close fuel tap.

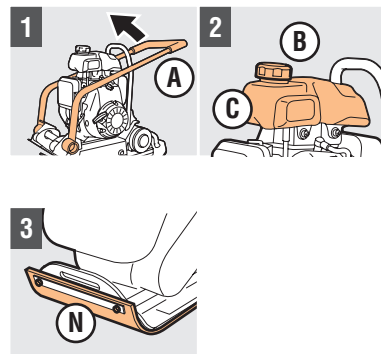
1. OPERATING FUNCTIONS



- A Control handle
- B Fuel cap
- C Fuel tank
- D Fuel tap
- E Choke
- F Ignition switch
- G Throttle lever

- H Start cord
- J Handle
- K Handle
- L Lifting bracket
- M Oil dipstick / filling cap
- N Rubber mat (option)

2. PREPARATION FOR OPERATING

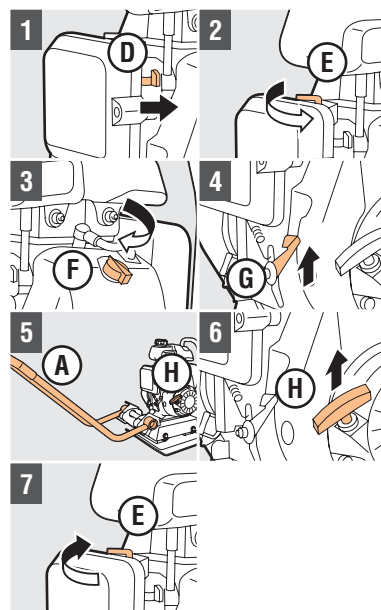


- 1 Put **A** in operating mode
- 2 Loosen **B**, fill **C** and tighten **B** again

Caution! Use unleaded petrol!
Caution! Fill **C** in open air without open fire, do not smoke, close **B** tightly, and clean spilled petrol before starting the engine!

- 3 Attach **N** with 2 bolts to the vibrating plate

3. OPERATING VIBRATION PLATE COMPACTOR

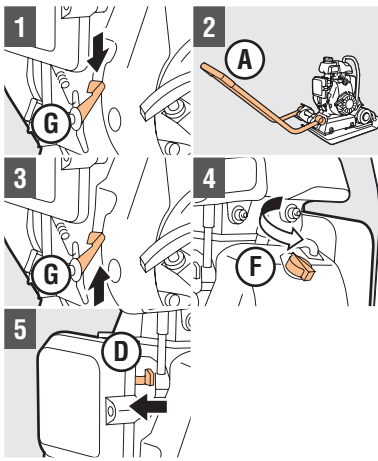


Starting motor

- 1 Turn **D** to the right
- 2 Slide **E** to the right if the motor is cold
- 3 Turn **F** in position 1
- 4 Set **G** in upper position
- 5 Hold **H** with one hand and **A** with the other hand
- 6 Pull **H** until resistance, slightly let **H** back then pull on **H** with a strong jerk, repeat this until the motor starts

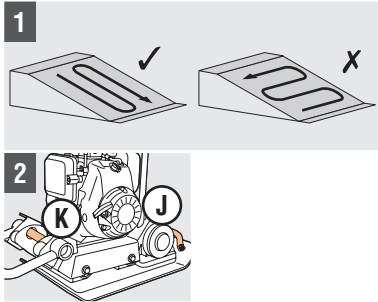
Rubber mat (option)

- Caution!** Do not suddenly let go of pulled out **H**!
- 7 Slide **E** gradually back to the left
- Note!** Only use machine when **E** is moved completely to the left!



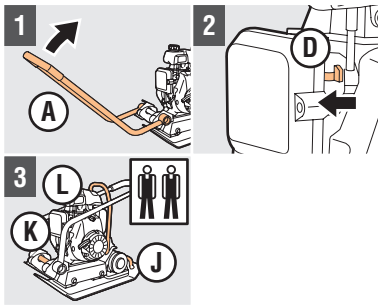
Compaction

- 1 Place **G** in lowest position
- 2 Use **A** to control machine and vibrate underground
Caution! Compact underground in straight lines until it is adequately compacted and turn in time!
Caution! At the right speed, slight vibration is felt at **A** and the machine will move smoothly on a flat surface without pushing!
- 3 Place **G** in upper position to stop the machine
- 4 Turn **F** to position 0
- 5 Turn **D** to the left to switch off motor
Caution! The motor can be very hot



Compacting on slopes

- 1 Compact slopes up and down not across
- 2 Attach a rope if necessary to **J** or **K** and have someone guide the machine using the rope.



Transporting vibratory plate

- 1 Fold **A** forward
- 2 Verify that **D** is turned to the left
- 3 Lift the machine with two persons by **J** and **K**, or hoist machine on **L**
Caution! Do not lift the machine on your own!
- 4 Moving the machine
Caution! Keep the machine horizontal so that no fuel runs out!
Caution! Only move the machine when the motor is switched off!

4. AFTER USE

- 1 Verify that the contact switch **F** is in position 0
- 2 Check that fuel tap **D** is turned to the left
- 3 Clean machine