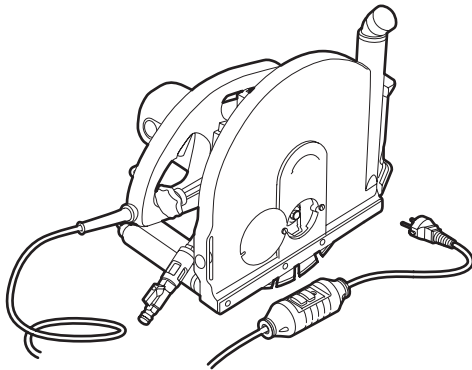


## WALL SAW

### Instructions for Use and Safety

The hand wall saw machine is intended for wet sawing in brick walls, concrete walls, floors and renovation work. The saw blade is equipped with a diamond saw blade to for a straight and optimal saw cut. The clean saw cuts need no finishing touches. The diamond saw blade remains completely enclosed during sawing, ensuring no water and dust are flung out. By using a PRCD switch, a protecting transformer is not required. Use the appliance in combination with a dust / water extraction system.



#### Caution!

Improper handling can injure the user or damage the device. Read the safety instructions first!

## SAFETY INSTRUCTIONS



#### Safety for user

- Always use earthed electrical outlets.
- Never use the machine without the protective guard.
- Keep children and pets out of reach of the machine.
- Only to be operated by qualified persons.
- Use outdoors; Check if the machine is connected via an earth leakage breaker(Max. 30mA).

#### Check before use

- Fitting of saw blade and protective cover.
- Work piece for nails, screws, etc. Remove these if present.
- Saw area for pipes or cables. If necessary use a detector.
- Check the machine visually for any defects.
- Damage of plug and power cord.

**Contact your rental company should you encounter any problems with the machine!**

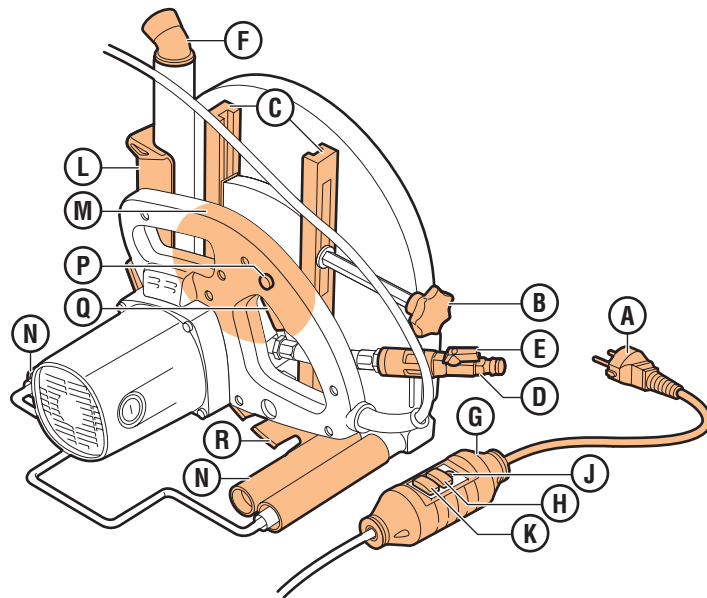
#### Safety during use

- **Never** lift the machine using the power cord.
- **Never** pull the power cable to move machine.
- Make sure the topside and bottom of the saw cut are free of objects.
- Do not force the saw blade.
- Switch the machine off immediately if the saw blade jams.
- Only use sharp and undamaged diamond saw blades.
- Lead the power cord from the rear of the machine.
- Handle the plug and power cord with care.
- **Never** operate the machine with a damaged plug or power cord.
- Using an extension cable. Avoid power loss, use at minimum a 2.5 mm thick cable and keep the cable as short as possible. Roll the cable all the way out.

#### Safety after use

- Remove the plug from the mains after use.

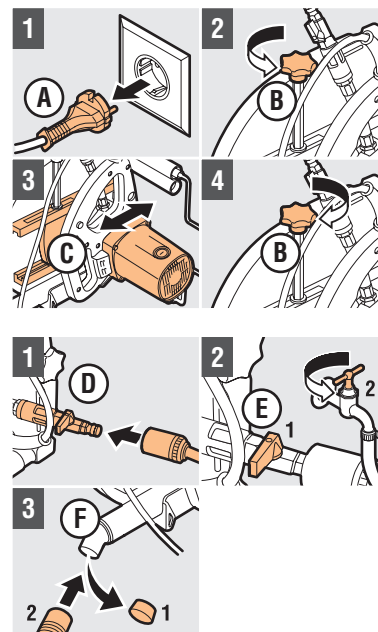
## 1. OPERATING FUNCTIONS



- A Plug / power cord  
B Lock button  
C Guide  
D Water connection  
E Tap  
F Dust / water extraction  
G PRCD switch  
H RESET button

- J Indicator  
K "TEST" button  
L Handle  
M Operating handle  
N Rollers  
P Block start / stop switch  
Q Start / Stop switch  
R Diamond saw blade

## 2. PREPARATION FOR USE



#### Adjusting the saw cutting depth

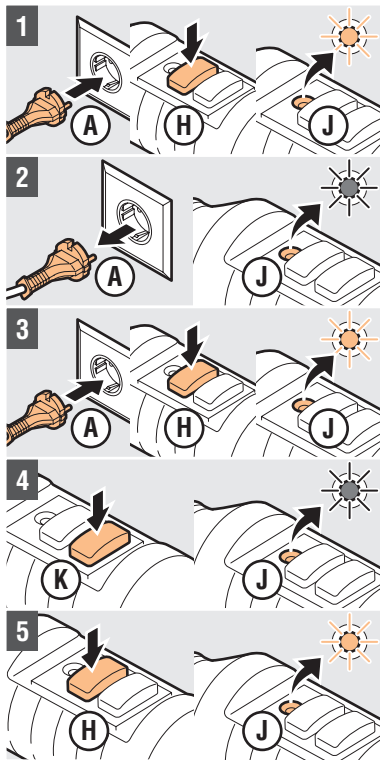
- 1 Do not insert A in wall socket
- 2 Loosen B
- 3 Move motor along C and set the depth of the saw cut  
**Caution!** Maximum cutting depth for each saw cut in concrete is 3 cm. Saw several times for a deeper saw cut!
- 4 Tighten B

#### Connecting machine

**Caution!** Water is necessary for cooling the diamond saw blade, avoiding dust development and unnecessary wear!

- 1 Connect water hose D
- 2 Keep E closed when making the coupling and open the main tap
- 3 Remove cap and insert suction hose F

### 3. PRCD-SWITCH



#### Test and operate PRCD-switch

**Caution!** The PRCD and power cord must never come into contact with water!

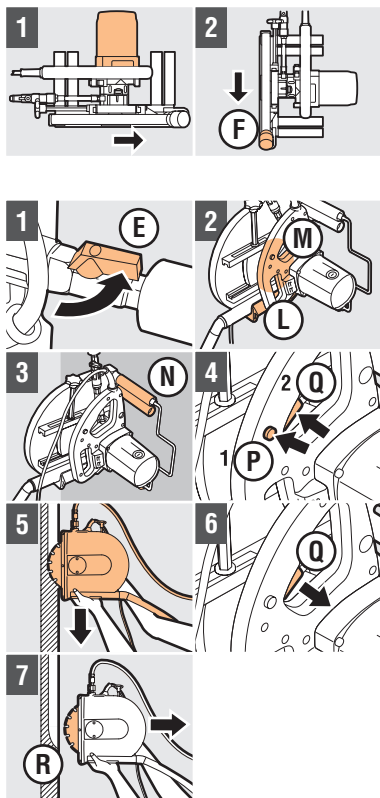
**Caution!** Never replace the standard connection cable with another type of connection cable!

#### PRCD test

- 1 Connect A to the mains, press H, J goes red
- 2 Unplug A, J goes black
- 3 Connect A to wall socket, press H, J goes red
- 4 Press K, J goes black
- 5 Press H, J goes red

**Warning!** Do not use device if the test is not successful!

### 4. OPERATING WALL SAW



#### Operating mode machine

**Caution!** Prevent water from entering the motor housing. Hold the machine as instructed!

- 1 Horizontal saw: hold engine upwards
- 2 Vertical saw: keep F beneath

#### Vertical saw with wall saw blade

- 1 Slowly open E
- 2 Hold the machine with L and M
- 3 Place machine with N flush against wall
- 4 Press P and then Q

**Caution!** Wait until R reaches operating revs!

- 5 Slowly let machine cut into wall and allow machine to saw into wall using its own weight

**Caution!** Do not force R, saw in a straight-vertical line!

**Caution!** Do not attempt to saw bends!

**Caution!** Limit the cutting depth (max. 3 cm per saw cut) and do not exert extra pressure on the machine, prevent overload!

- 6 Release Q to turn off machine
- 7 Wait until R stops rotating, take machine out of saw cut

### 5. AFTER USE

- 1 Unplug A
- 2 Close the main tap and then tap E
- 3 Disconnect water hose and suction hose
- 4 Clean machine