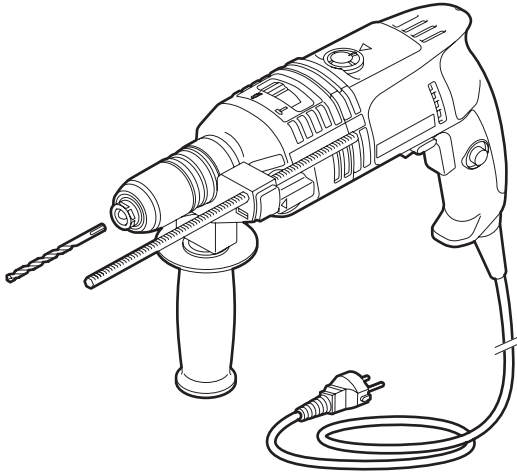


## ROTARY HAMMER DRILL

### Instructions for Use and Safety

The drill is intended for drilling in stone, wood, metal, ceramic and plastic. The electronic control machine is also suitable for screwing and unscrewing screws and cutting of threads.



### Caution!

Improper handling can injure the user or damage the device. Read the safety instructions first!

## SAFETY INSTRUCTIONS



### Safety for user

- Check drill site for pipes or cables. If necessary use a detector.
- Always hold the machine with two hands.
- Keep out of reach of children and pets.

### Check before use

- Position of the On / Off switch This must be in OFF position.
- Correct attachment of drill.
- Machine visually for defects.
- Damage of plug and power cord.

**Contact your rental company should you encounter any problems with the machine!**

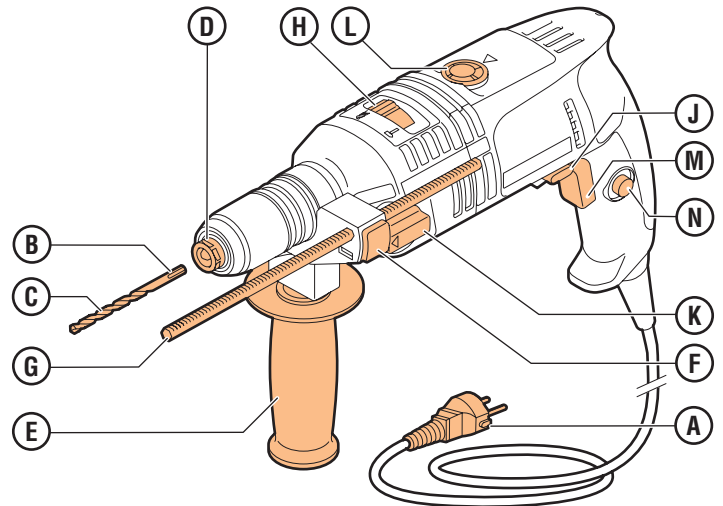
### Safety during use

- **Never** lift the machine using the power cord.
- **Never** pull the power cable to move machine.
- Do not force machine.
- Handle the plug and power cord with care.
- **Never** use machine with a damaged plug or power cord.
- Using an extension cable. Avoid power loss, use at minimum a 2.5 mm thick cable and keep the cable as short as possible. Unroll the cable all the way out.

### Safety after operating

- After use remove the electric plug from the mains.

## 1. OPERATING FUNCTIONS



A Plug / power cord

B Shaft

C Drill

D Quick-release drill holder with

Auto-Lock

E Adjustable handle

F Button depth stop adjustment

G Depth stop

H Selector switch

J Rotary direction switch

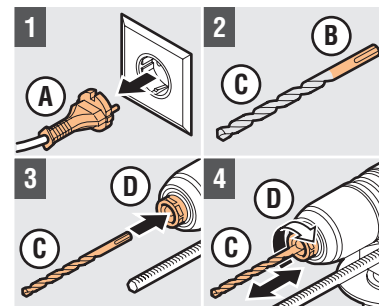
K Mechanical speed control

L Thumb wheel speed control

M On-off switch

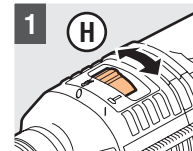
N Lock button

## 2. PREPARATION FOR USE



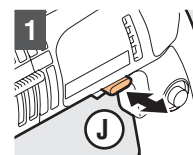
### Placing the drill

- 1 Do not plug A into the mains
- 2 Verify that part B from C is clean
- 3 Place C in D
- 4 Lock C with D



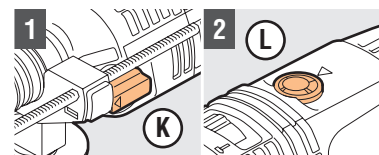
### Selector switch

- 1 position 0: drilling  
Position 1: hammer
- Caution!** Only alter H when machine is not rotating!



### Rotary switch

- 1 Press J left or right depending on the desired direction of rotation
- Caution!** Only alter J when the machine is not rotating!

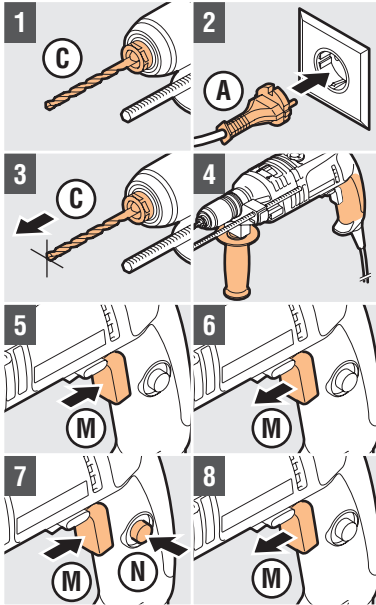


### Mechanical and step-less speed control

- 1 Position 1, lower rotational speed  
Position 2, higher rotational speed

- 1 Turn L to position 1 or 2, depending on the desired speed range
- Caution!** Never operate K under full load!
- 2 Turn L to desired position

### 3. OPERATING ROTARY HAMMER DRILL



- 1 Check mounting of C
- 2 Plug A in mains
- 3 Place C against surface
- 4 Hold the drill with both hands
- 5 Push M and drill the hole
- 6 Release M to turn off machine

#### For prolonged use:

- 7 Push M and lock with N
- 8 Push M and release to turn off machine

### 4. AFTER USE

- 1 Remove plug A from mains
- 2 Disassemble drill C
- 3 Clean machine