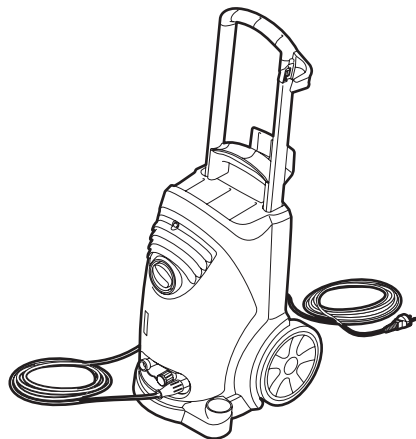


HIGH PRESSURE CLEANER

Instructions for Use and Safety

High pressure cleaner is intended for quick and thorough cleaning of facades, pavements, swimming pools, machines, cars, caravans, etc. The machine is equipped with a cleaning agent suction and dosage. Apparatus must always be used with cold water.



Caution!

Improper operation can injure the user or damage the device. Read the safety instructions first!

SAFETY INSTRUCTIONS



Safety for user

- Only use approved detergents.

Caution! Never draw undiluted acids or solvents! Spray mist may be flammable, explosive or toxic.

Caution! Do not point water jet at persons, animals or electrical appliances! Under high pressure, retardant fluids can penetrate skin and cause severe injuries.

- Always use earthed electrical outlets.
- Keep out of reach of children and pets.

Check before use

- Position of main switch. This must be set at 0.
- Fuse earthed electrical outlet. This must be 16 A.
- Connection of hoses to high pressure cleaner.
- Device visually on defects.
- Electric plug and power cord for damage.

Contact your rental company should you encounter problems with the machine!

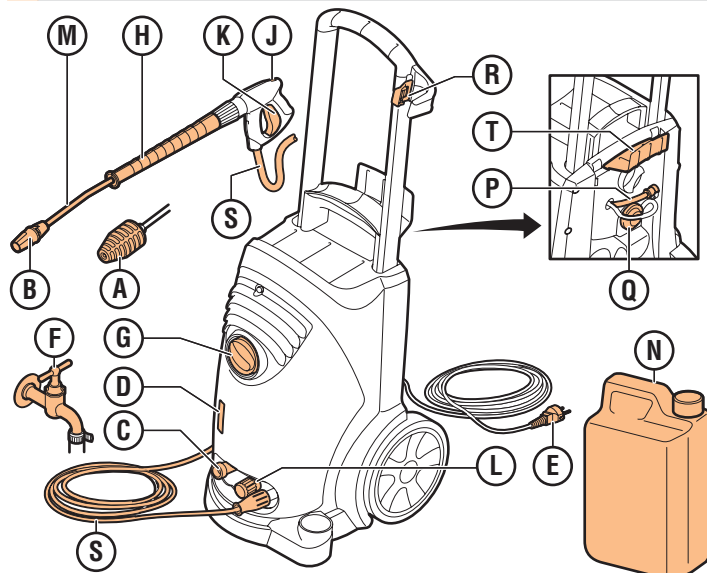
Safety during use

- Never use device horizontally.
- Only use cold water.
- Never** move device by pulling high pressure hose or power cable.
- Do not operate the device with a closed gun for more than 2 minutes.
- Always aim the high pressure jet at a distance to the object to be cleaned to prevent high pressure damage.
- Never** Lock the gun start / stop lever when operating.
- Handle the plug and power cord carefully.
- Never** use the device with a damaged plug or power cord.
- Using an extension cable. Avoid power loss, use at minimum a 2.5 mm thick cable and keep the cable as short as possible. Unroll the cable all the way out.

Safety after operating

- After use remove the electric plug from the wall socket

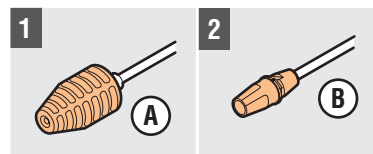
1. OPERATING FUNCTIONS



A Rotary / pulsing nozzle
B Adjustable spray nozzle
C Connection of water supply
D Oil level indicator
E Plug / power cord
F Water tap
G Main switch
H Hand grip spray gun
J Locking lever

K Start / Stop lever
L Control knob
M Spray lance
N Reservoir
P Detergent suction hose
Q Dosing knob CHEM
R High pressure hose
S Holder spray gun
T Holder high pressure hose

2. PREPARATION FOR USE



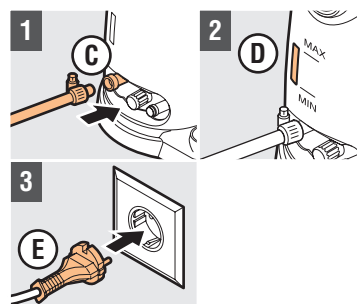
Choice of nozzle

- Rotary / pulsing nozzle **A**:
- point radius for severe dirt
- Adjustable nozzle **B**:
- high pressure radius for stubborn dirt
- high pressure surface jet for dirt on large surfaces
- low pressure jet for operating with detergent
Caution! Twist **B** Only when spray gun is closed!

Connect high pressure cleaner

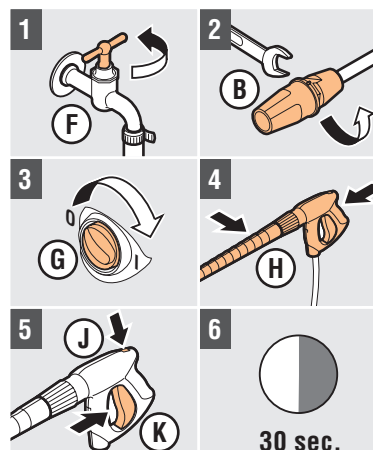
Caution! Place device on stable surface

- Connect water hose **C**
- Check **D**; Level between MIN. and MAX.
- Plug **E** In earthed outlet

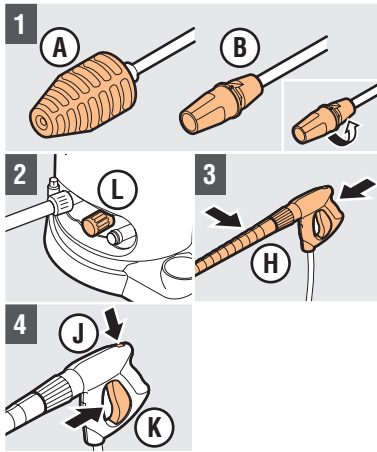


Bleed high pressure cleaner

- Turn **F** open
- Remove **B**
- Turn **G** on I
- Hold **H** with both hands
- Press **J** and **K**
- Actuate **K**

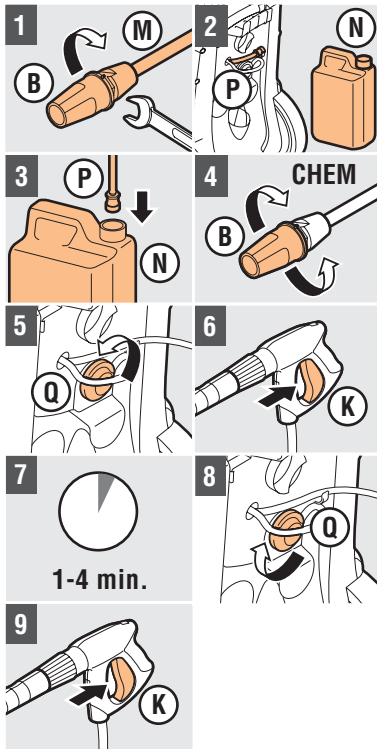


3. OPERATING HIGH PRESSURE CLEANER



Working without detergent

- 1 Mount **A** or **B**
Caution! When used without cleaning agent: Twist **B** completely for maximum spray pressure!
- 2 Twist **L** for pressure and quantity
- 3 Hold **H** With both hands
- 4 Actuate **K** and clean object



Working with detergent

- Caution!** Bleed device first!
- 1 Mount **B** on **M**
 - 2 Place **N** near **P**
Caution! Consult requirements for the cleaning agent!
 - 3 Draw **P** out and insert **P** in **N**
 - 4 Turn **B** to position **CHEM**
 - 5 Set dosage with **Q**
Caution! Consult requirement detergent for dosage!
 - 6 Actuate **K** and apply detergent sparingly
 - 7 Let cleaning agent soak in
 - 8 Close **Q**
 - 9 Actuate **K** and clean object

4. AFTER USE

After use with detergents

- 1 Hang suction hose (**P**) in tank with clean water
- 2 Set **Q** to maximum dosage
- 3 Press start / stop lever (**K**) approx. 1 minute, clean water should eject from spray lance (**M**)
- 4 Replace suction hose (**P**), close dosage knob (**Q**)

After use

- 1 Close water tap (**F**)
- 2 Press start / stop lever (**K**) until device is empty
- 3 Turn main switch (**G**) to 0 and disassemble water hose
- 4 Remove plug in (**E**) from mains
- 5 Clean device
- 6 Place spray lance (**M**) in container (**R**)
- 7 Wrap high pressure hose (**S**) and plug / power cable (**E**) around holder (**T**)
Caution! Always store the machine in frost-free area!