

WET/DRY VACUUM CLEANER

Safety instructions and use

The dry-wet vacuum cleaner is intended for vacuuming dry and liquid substances. The device is suitable for quick and thorough cleaning of indoor, vinyl, concrete and tiled floors.



Caution!

Improper operation can injure the user or damage the device. Read the safety instructions first!

SAFETY INSTRUCTIONS



Safety for user

- Always use grounded electrical outlets.
- **Never** vacuum undiluted acids or solvents.
- **Never** vacuum inflammable or explosive liquids.
- **Never** vacuum dangerous liquids.
- Keep out of reach of children and pets.

Check before use

- Correct mounting filter, dust bag and brush / rubber strips in suction nozzle.
- Device visually on defects.
- Electric plug and power cord for damage.

Contact your rental company should you encounter problems with the machine!

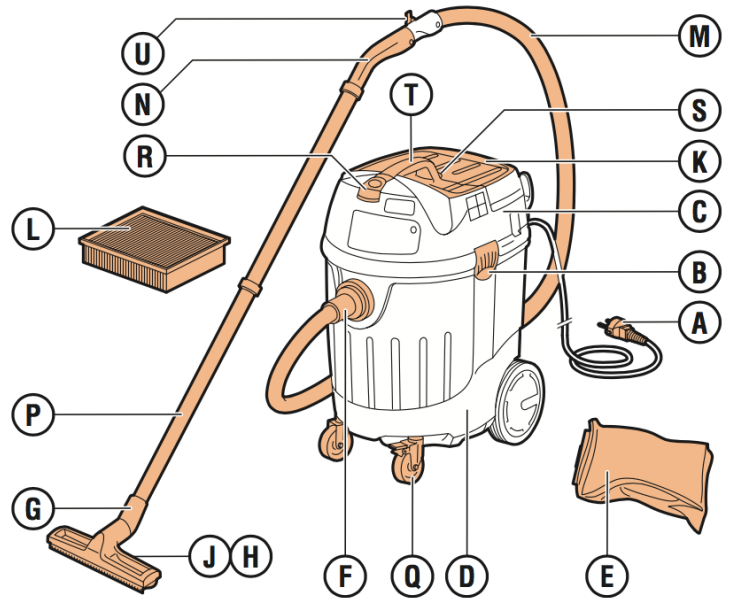
Safety during use

- Never pull the power cable to move machine.
- Never use a dry vacuum cleaner without a filter.
- Never use a wet vacuum cleaner without a filter.
- Lead power cord from the back of the device.
- Handle the plug and power cord carefully.
- **Never** use the device with a damaged plug or power cord.
- Do not use an extension cable.

Safety after use

- Remove the plug from the wall socket after use.

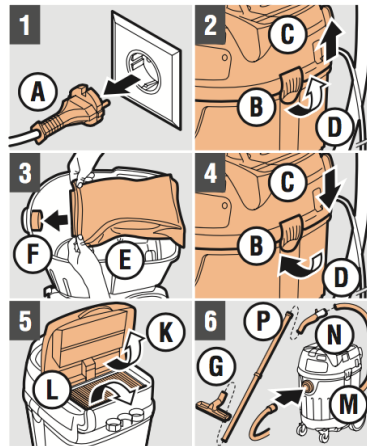
1. OPERATING FUNCTIONS



- A Plug / power cord
- B Clamps
- C Motor housing
- D Liquid reservoir
- E Dust bag
- F Vacuum hose connection
- G Vacuum nozzle
- H Brush strips
- J Rubber strips
- K Cover filter

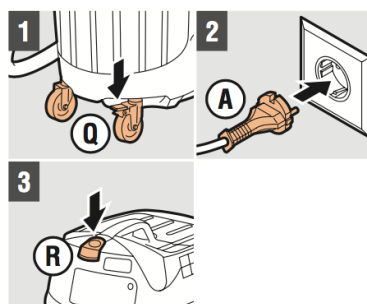
- L Filter
- M Vacuum hose
- N Handle vacuum hose
- P Vacuum tube
- Q Swivel wheels
- R On-Off switch
- S Push button automatic filter cleaning
- T Handle
- U Lever Automatic filter cleaning

2. PREPARATION FOR USE



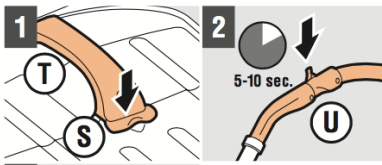
- 1 Do not plug **A** in power outlet
- 2 Remove **B** from **C** and lift **C** from **D**
- 3 Verify that **E** has been placed inside **F**
 - Dry Vacuuming: Place **E**
 - Water vacuuming: Remove **E**
- 4 Mount **C** back on **D** and secure **B**
- 5 Open **K** on topside, check if **L** is clean, dry and properly mounted
- 6 Mount **M**, **N**, **P** and **G** on device

3. OPERATING DRY/WET VACUUM CLEANER



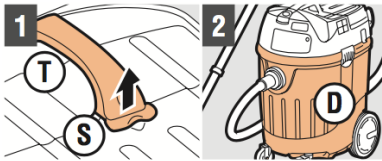
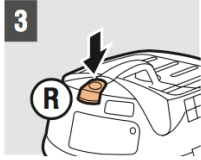
General

- 1 Place device on level surface
Caution! If needed engage brake **Q!**
- 2 Plug **A** in a grounded power outlet
- 3 Press **R** to switch on the device



Dry vacuuming

- 1 Verify that red **S** is pushed behind **T**
- 2 Press **U** regularly
Caution! Press **U** every 5-10 sec. with very fine dust (to clean filter)!
- 3 Press **R** to turn off device



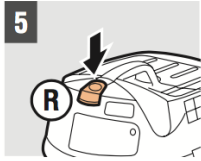
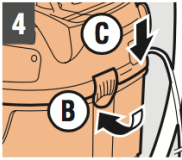
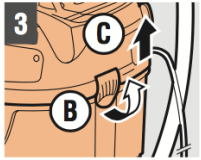
Wet vacuuming

- 1 Pull red **S** behind **T** upwards to disable automatic filter cleaning
- 2 The device automatically stops when it reaches the maximum liquid level

Caution! Check regularly if **D** is full. Empty **D** in a timely manner!

Caution! Water with detergents may foam which stops the device prematurely!

- 3 Remove **B** from **C** and empty device
- 4 Place **C** Back and lock with **B**
- 5 Press **R** and start work



4. AFTER USE

- 1 Press on / off switch **R**, to switch device on
- 2 Vacuum clean water to rinse the inside of the device
- 3 Press the power button **R** to switch off device
- 4 Remove plug **A** from power outlet
- 5 Empty liquid reservoir **D** and rinse clean
- 6 Assemble the device and clean the outside